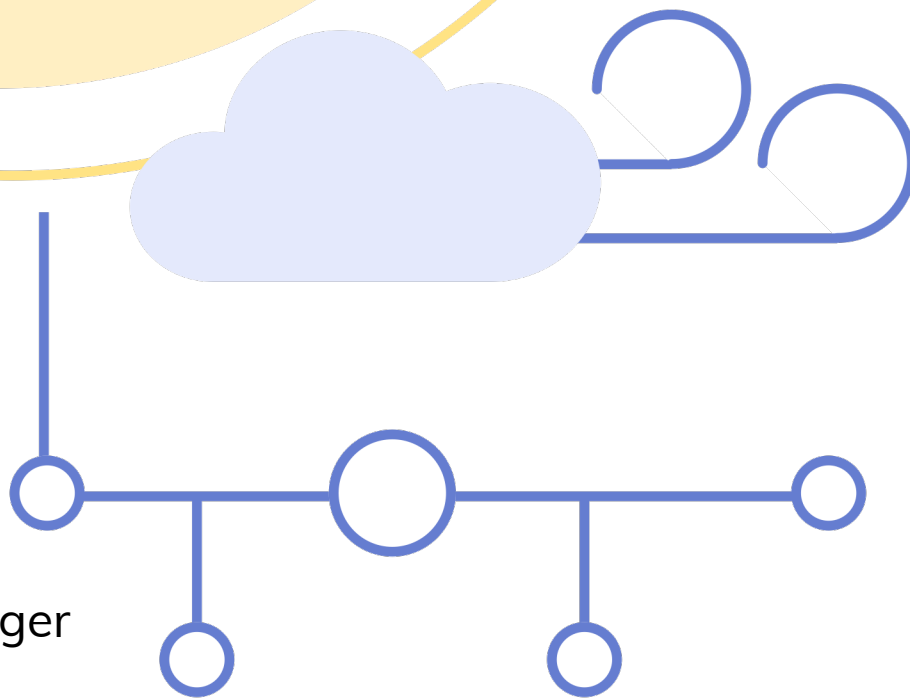


SMART ENERGY ALAND



Anna Häger

Communicator & Project Manager



The Åland Islands – in brief

~30.000 islanders live on 60 of the 6.700 islands and islets

Autonomy, own government since 1922

Legislation in several areas e.g.

Societal administration

Internal traffic

Business promotion

Energy

Enables the government of Åland to
facilitate a full-scale
societal transformation

The Åland Islands – in brief

2014 The government of Åland vows that Åland will be sustainable by 2051

2014 First sustainability agenda adopted (UN 17 SDG released 2015)

2016 Second sustainability agenda for 2030 goals adopted



2nd Sustainability Agenda of Åland

SMART
ENERGY
ÅLAND



bärkraft.ax

The 7 strategic development goals

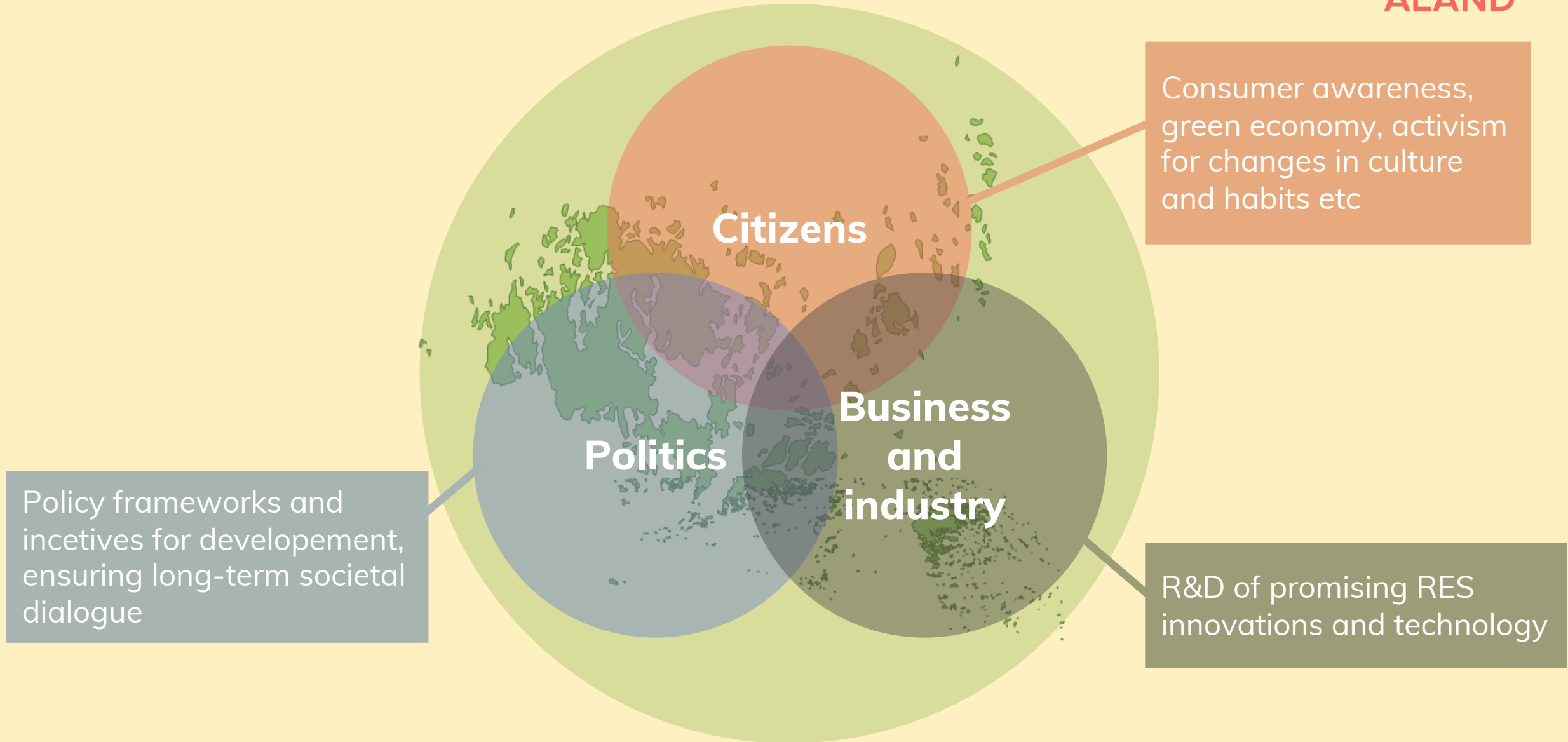


1. Happy people whose inherent resources increase
2. Everyone feels trust and has real possibilities to participate in society
3. All water is of good quality
4. Ecosystems in balance and biological diversity
5. Attractive for residents, visitors and businesses
6. Significantly higher proportion of energy from renewable sources, plus increased energy efficiency
7. Sustainable and mindful patterns of consumption and production

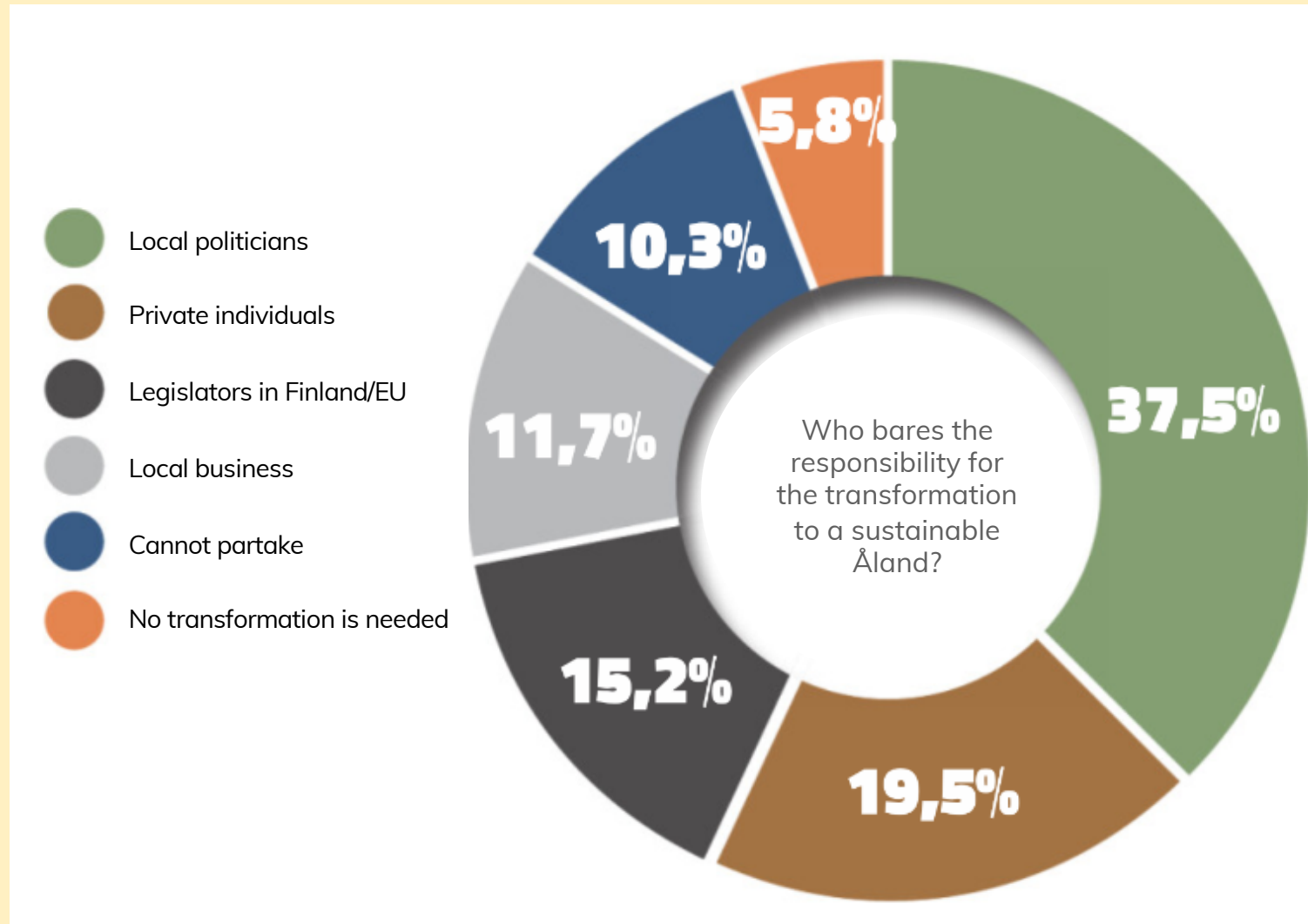


bärkraft.ax

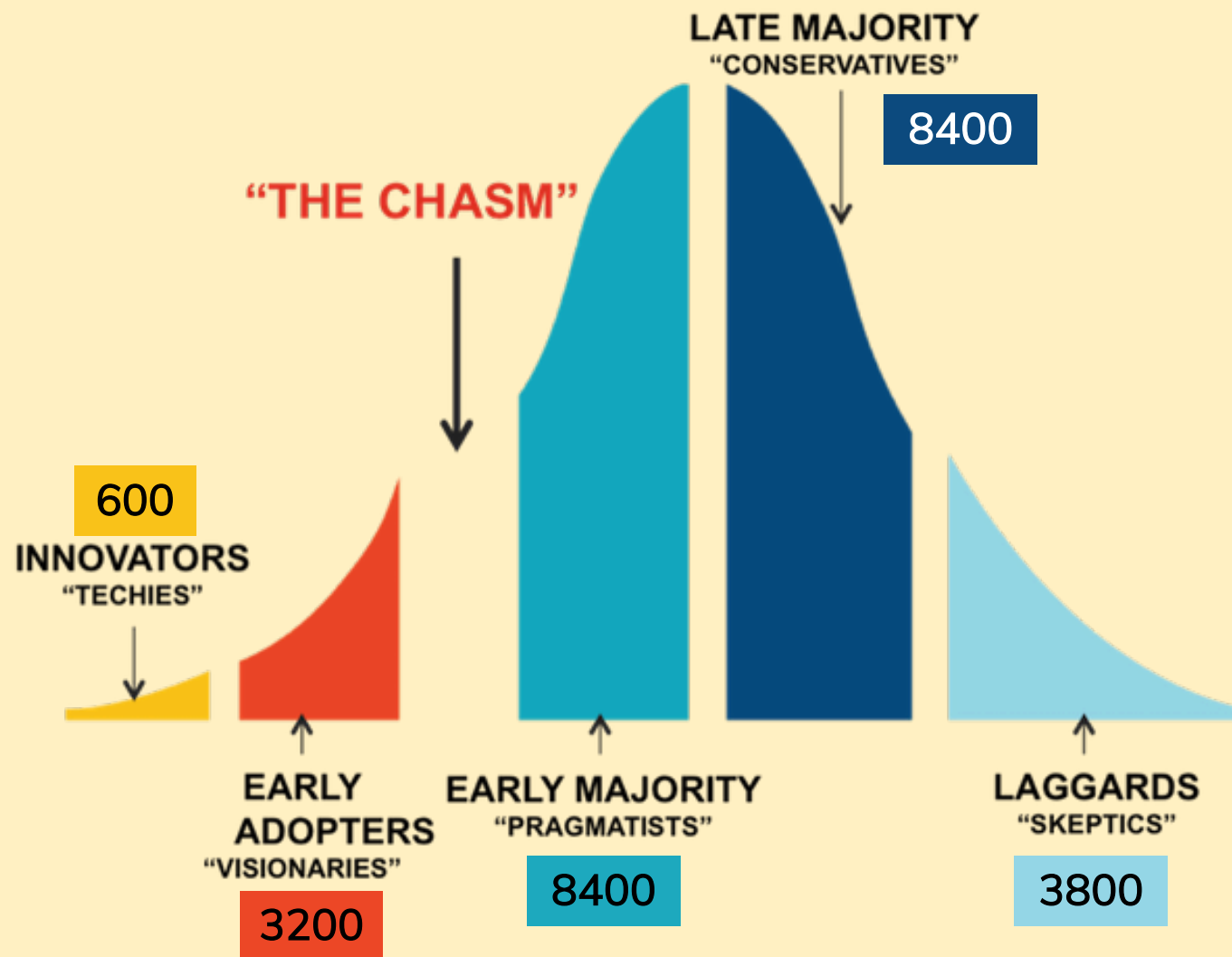
What makes a sustainable society?



Who bares the responsibility?



Change is hard – for some!



Upcoming Master Thesis in Sustainable Development

SMART
ENERGY
ÅLAND

- Which drivers enable a full scale societal transformation for a 100 % renewable and flexible energy system on the Åland Islands?
- Who is regarded as key stakeholders and/or major societal influencers?

li.u LINKÖPING
UNIVERSITY



SEI Stockholm
Environment
Institute

HÅ
HÖGSKOLAN PÅ ÅLAND
ÅLAND UNIVERSITY OF APPLIED SCIENCES

Full-scale societal transformation

Reaching out and connecting with **all stakeholders**, at **all levels**

No one is left behind – **avoiding** technological **segregation**

Gaining trust and **invoke ownership** to the solution at hand

Spreading **inspiration** by demonstrating know-how skills

Combined forces of society – **equal growth speed**

Tools for citizen engagement

User-friendly website – *availability and inspire to action*

A blue line diagram representing a network. It starts with a vertical line from the top left, leading to a circle. From this circle, a horizontal line extends to the right, passing through two more circles. From the first circle on the horizontal line, a vertical line goes down to another circle. From the second circle on the horizontal line, a vertical line goes down to another circle. The line continues to the right, ending at a third circle.

Vi skapar världens första
energismarta samhälle.
Vill du hänga med?

Vi håller dig uppdaterad

Det här är Smart Energy Åland

Du kan göra skillnad

Varför på Åland?



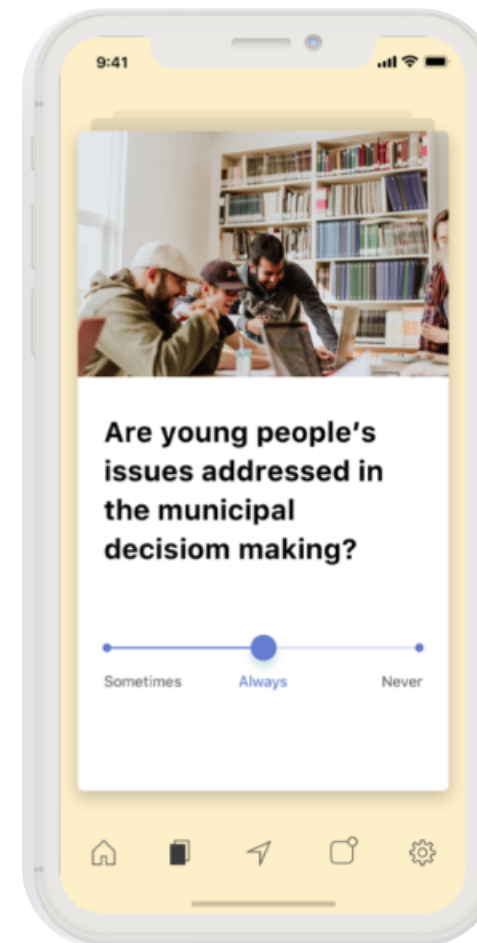
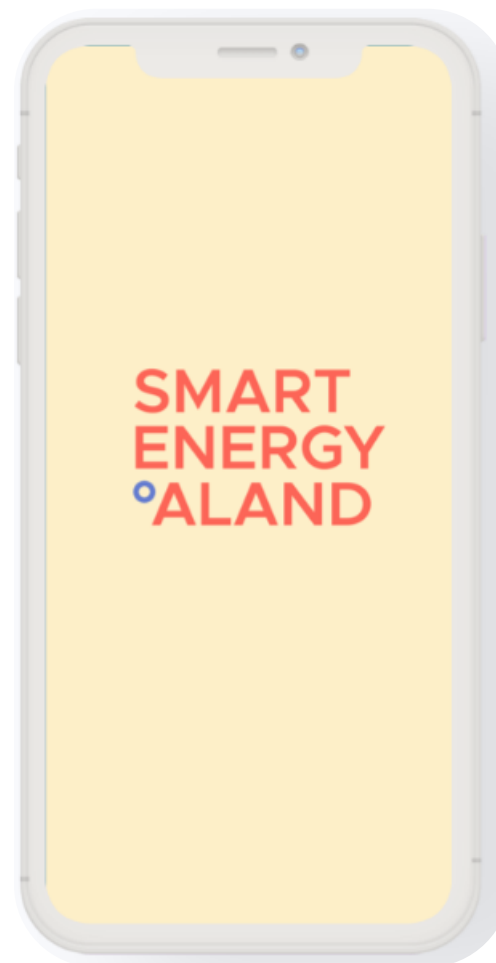
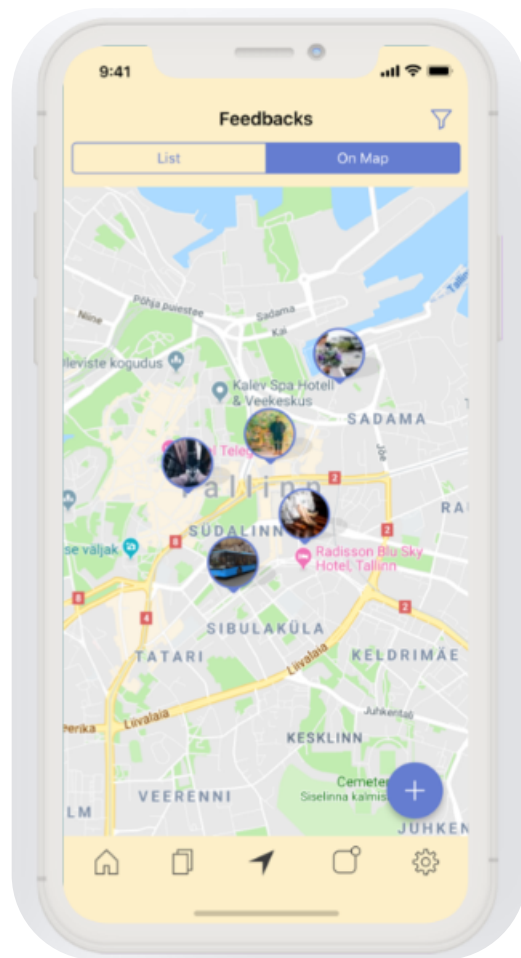
Tools for citizen engagement

User-friendly website – *availability and inspire to action*

App launch – *transparency and up to date activity*

Local project app

SMART
ENERGY
ALAND



Tools for citizen engagement

User-friendly website – *availability and inspire to action*

App launch – *transparency and up to date activity*

Crowdfunding – *ownership and sustainable investments*

Crowdfunding through Blockchain

SMART
ENERGY
ALAND



Source: Pylon

Tools for citizen engagement

User-friendly website – *availability and inspire to action*

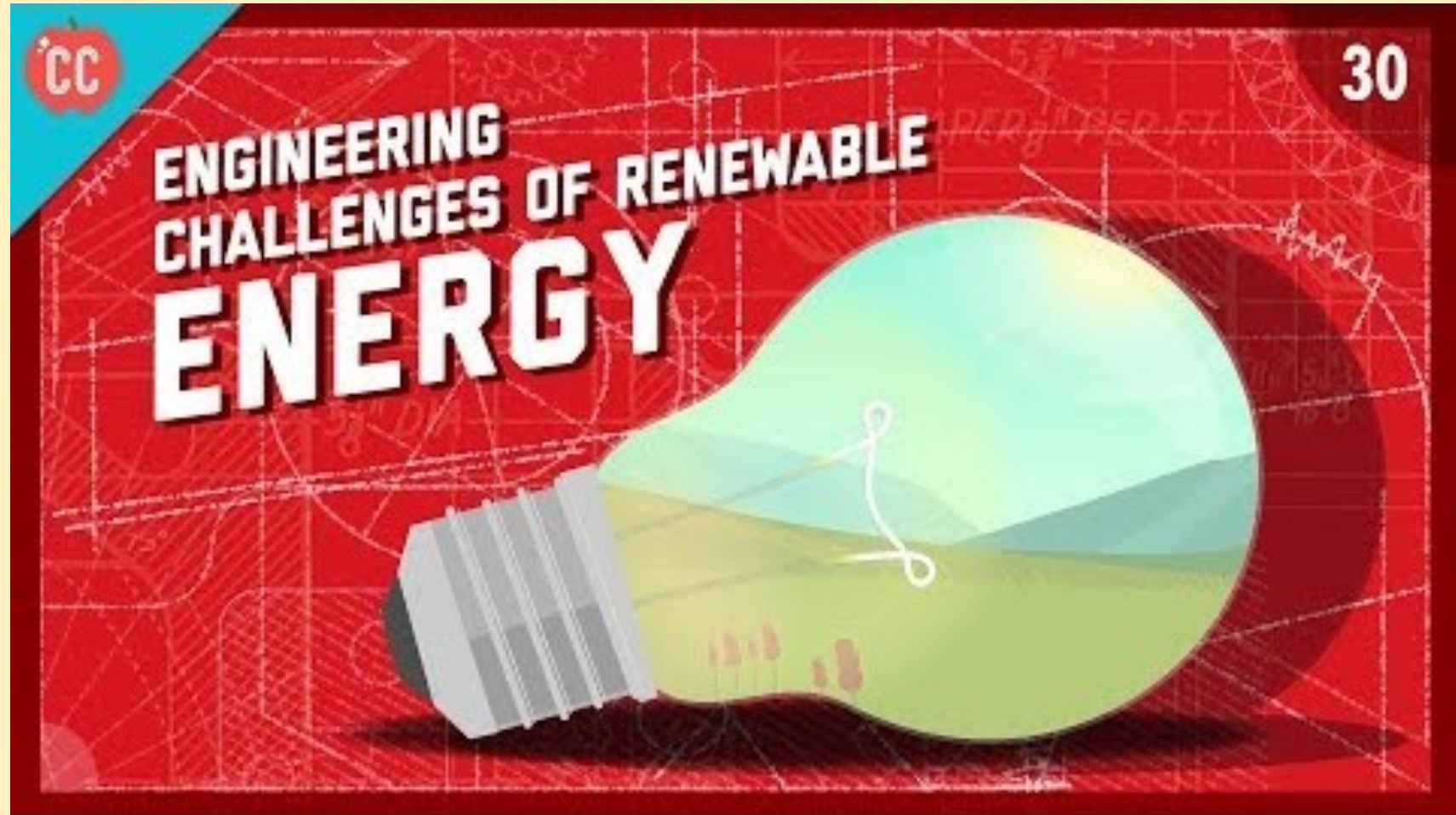
App launch – *transparency and up to date activity*

Crowdfunding – *ownership and sustainable investments*

Crash-course material – *knowledge is for everyone*

Crash courses in renewable energy

SMART
ENERGY
°ALAND



Tools for citizen engagement

User-friendly website – *availability and inspire to action*

App launch – *transparency and up to date activity*

Crowdfunding – *ownership and sustainable investments*

Crash-course material – *knowledge is for everyone*

....and much more yet to come

Thank you for your time!

Anna Häger
anna.hager@flexens.com

